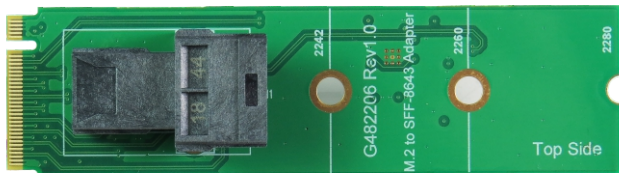
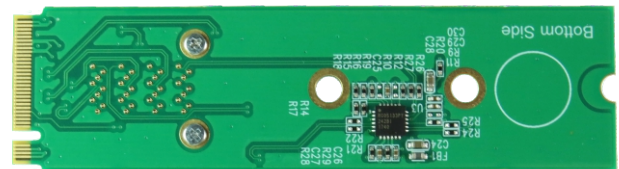


M.2 M-key golden finger to Mini SAS HD Adapter



Top side



Bottom side

Features

- ※ 4 lanes of PCI-e designated
- ※ 4 Layer PCB designed
- ※ Built-in mini SAS HD(SFF-8643) connector
- ※ Connected PCIe 4 Lane signals, from M.2 golden finger to mini SAS HD(SFF-8643)
- ※ Supports SFF-9402 Clock define
- ※ Supports Intel Clock define

Specifications

- ※ PCI Express Card Electromechanical Spec. Rev. 2.0
- ※ PCI Express M.2 Spec. Rev. 0.7, Ver. 1.0
- ※ SFF-8643 Rev 3.5

Support Series Cables

- ※ SFF-8643 to SFF-8639 Cable
- ※ SFF-8643 to SFF-8643 Cable
- ※ SFF-8643 to SFF-8654 Cable
- ※ SFF-8643 to SFF-8611 Cable

Support M.2 SSD Form Factor

- ※ Type 2280-D2-B-M: 80mm(L) x 22mm(W)
- ※ Type 2260-D2-B-M: 60mm(L) x 22mm(W)
- ※ Type 2242-D2-B-M: 42mm(L) x 22mm(W)